

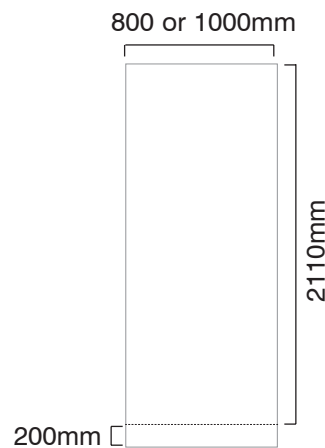


This smart roller banner with a substantial anodised silver casing provides the perfect combination of design with stability.

The spring loaded rail clamp system and slide on/off applicator make it easy to apply or change your graphic.

features & benefits

- Stylish lightweight components
- Available in two widths, 800 or 1000mm
- Can be used as single or double sided
- Wide base for extra stability
- Anodised silver finish
- Quick to assemble and easy to use
- Includes quality foam padded carry bag



Graphic dimensions
(all dimensions are approx)



hardware specifications

Assembled Dimensions (mm):
2200 (h) x 825 (w) x 245 (d) approx

Base Dimensions (mm):
90 (h) x 825 (w) x 245 (d) approx

Weight:
6kg approx (including bag)

graphic specifications

Visible Graphic Dimensions (mm):
2110 (h) x 800 (w) or 1000 (w) approx

Substrate:
Add 200mm to graphic length to allow for roller. Recommended material thickness between 225 and 300 microns

additional info

Included in kit:
Top grip rails x2, base, bungee pole set, pole doubler and carry bag

availability:
Anodised silver

Assembly Instructions

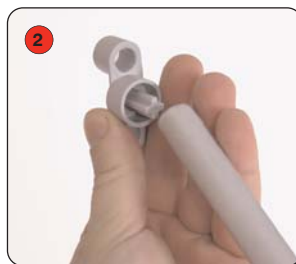
Banner stand assembly



Kit includes: Top grip rails x2, base, bungee pole set, pole doubler and carry bag



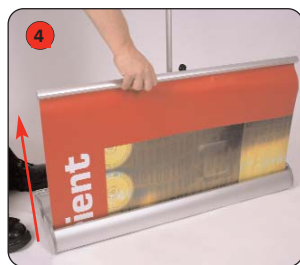
1 Assemble the bungee pole set.



2 Place the pole doubler onto one end of the bungee pole.



3 Fit the bungee pole into the banner stand base



4 Lift the top rail to raise the first graphic from the base.



5 Lean the banner stand backwards and continue to extend the graphic.



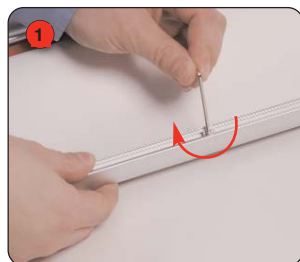
6 Secure the top rail cup onto the bungee pole doubler.



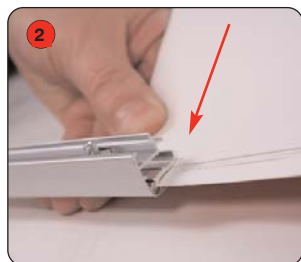
7 Raise the 2nd top rail and secure onto the pole doubler (as steps 5 & 6)

Hold the Top rail whilst lowering each banner (do not drop) to prevent damage to the graphic

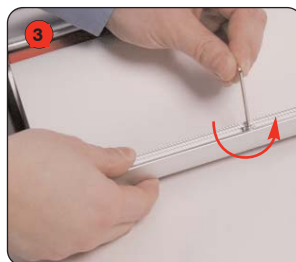
Graphic attachment instructions



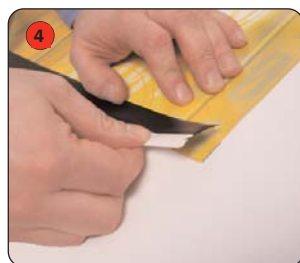
1 Loosen the Top grip rail screws using a 2.5mm allen key.



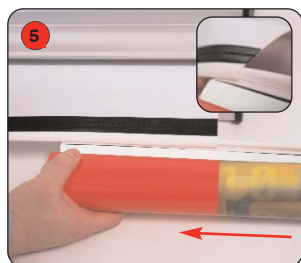
2 Squeeze open the Top grip rail and slide the graphic squarely into the rail.



3 Tighten the Top grip rail screws using a 2.5mm allen key.



4 Align and adhere the graphic squarely to the slider strip. (attach to front face of graphic)



5 Slide the graphic onto the leader strip.



6 Whilst holding the Top rail remove the locking pin from the base and gently allow the graphic to retract.

After fitting, the graphic should be left for 24 hours before use, to ensure the adhesive bonds sufficiently.

Note: Opening the banner stand base may invalidate the product warranty